

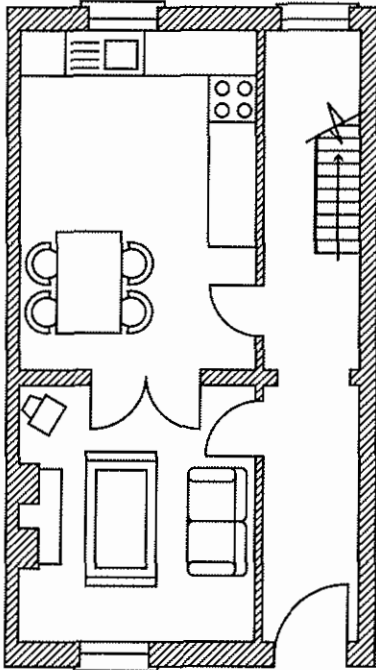


Worksheet A2

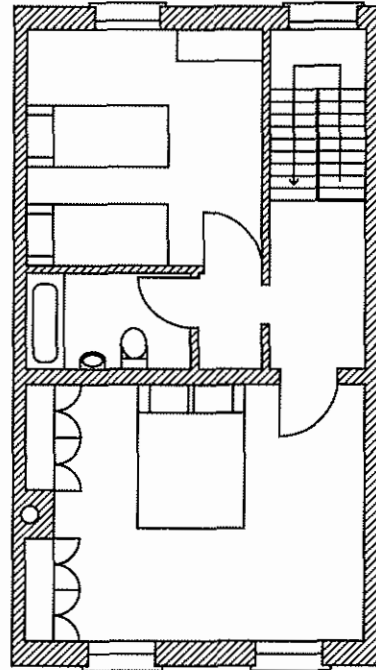
Do this with Lesson 4.

Put all completed work in your folder.

Here are the ground floor and first floor plans of an imaginary house. Study the plans. Think about what the symbols mean. Then fill in the answers to the questions.



Ground Floor



First Floor

1. There are.....rooms.
2. There arewindows.
3. There areexterior doors.
4. There are.....interior doors.
5. Where is the wash-hand basin? Label it on the drawing.
6. Does the front door open inwards or outwards?
7. Where is the fireplace? Label it on the drawing.
8. Which room has the most windows?

.....
.....

9. Where are the stairs? Label them on the drawing.
10. Make drawings to show how to represent: a sink with draining board; a wash-hand basin; a toilet.



Homework

Materials: "Surveying Guidelines" and "Drawing Guidelines", as well as any necessary drawing equipment.

1. Measure the dimensions of the ground floor of your home. You can record your measurements on the sketch you did in class.
2. Put a sheet of tracing paper over a sheet of graph paper. Make an accurate scale drawing of the ground floor of your home. Assume that external walls are 300 mm thick and internal walls are 100 mm thick.



Scrapbook

Add more material to your section on **Floor Plans**. Look in magazines or in brochures which advertise new properties and new housing estates. Refer to books on design or architecture in your school or local library. Photocopy any of the plans which appeal to you or which give you ideas.

Vocabulary File

Add new words and definitions to your file.